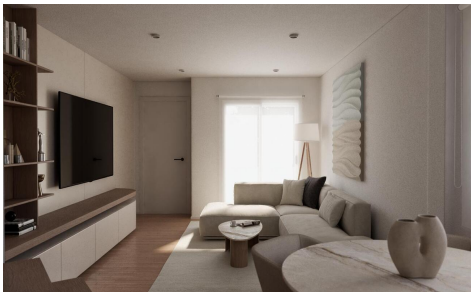




Bavaro

Duplex in Portman **€198,000**



2



2



100m²



N/A



Residencial Playa Bávaro - Brand New 2 & 3 Bedroom Duplexes in Portman Prices from €198,000
 Off-plan purchase - First properties will be handed over in April 2026
 Residencial Playa Bávaro is an exclusive development of 39 contemporary duplex homes set in one of Portman's most privileged locations. Designed for an authentic Mediterranean lifestyle, these homes offer spectacular views across Portman Bay and the Mediterranean Sea, best enjoyed from your private rooftop solarium-perfect for sunrise coffees or warm evening sunsets. Portman is a charming south-facing coastal town surrounded by mountains, offering a unique microclimate with mild temperatures year-round. The area provides endless hiking and cycling routes, beautiful beaches, and complete